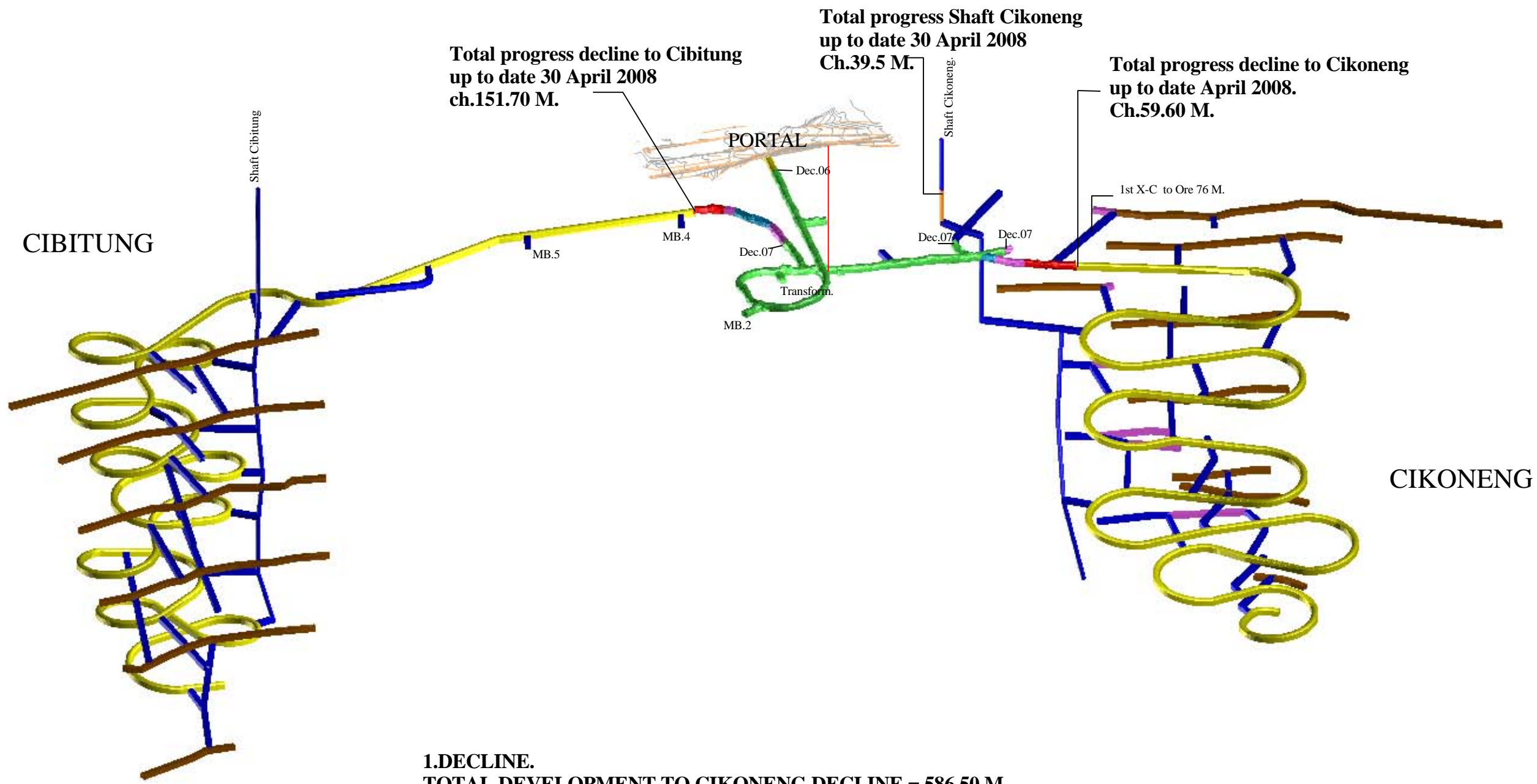


progress_30_april_2008



**Total progress decline to Cibitung
up to date 30 April 2008
ch.151.70 M.**

**Total progress Shaft Cikongeng
up to date 30 April 2008
Ch.39.5 M.**

**Total progress decline to Cikongeng
up to date April 2008.
Ch.59.60 M.**

**1.DECLINE.
TOTAL DEVELOPMENT TO CIKONENG DECLINE = 586.50 M.
TOTAL DEVELOPMENT TO CIBITUNG DECLINE = 155.70 M.
GRAND TOTAL = 742.20 M.**

**2.SHAFT.
TOTAL DEVELOPMENT SHAFT CIKONENG = 39.70 M.**

SURPAC MINEX GROUP

CIBALIUNG GOLD PROJECT
VIEW 3D

PROGRESS DEV.DECLINE UP TO DATE 30 APRIL 2008

Scale: 1: 3000	Plan No.	Date: 01-May-08
----------------	----------	-----------------